

Mech-Eye NANO

Palm-Sized Industrial 3D Camera

High Precision • Small Size • Fast Acquisition
High Flexibility • Easy Integration • Competitive Price



MTBF (Mean Time Between Failures): $\geq 40,000$ hours

Specification

Recommended working distance: 300–600 mm

Near FOV: 220×150 mm @ 0.3 m

Far FOV: 440×300 mm @ 0.6 m

Resolution: 1280×1024

Megapixels: 1.3 MP

Operating temperature: 0–45°C

Communication interface: Gigabit Ethernet

IP rating: IP65

Image sensor: Sony CMOS for high-end machine vision

Point Z-value repeatability (σ)^[1]: 0.1 mm @ 0.5 m

Measurement accuracy (VDI/VDE)^[2]: 0.1 mm @ 0.5 m

Typical capture time: 0.6–1.1 s

Baseline: Approx. 68 mm

Dimensions: Approx. $145 \times 51 \times 85$ mm

Weight: Approx. 0.7 kg

Input: 24 V DC, 1.5 A

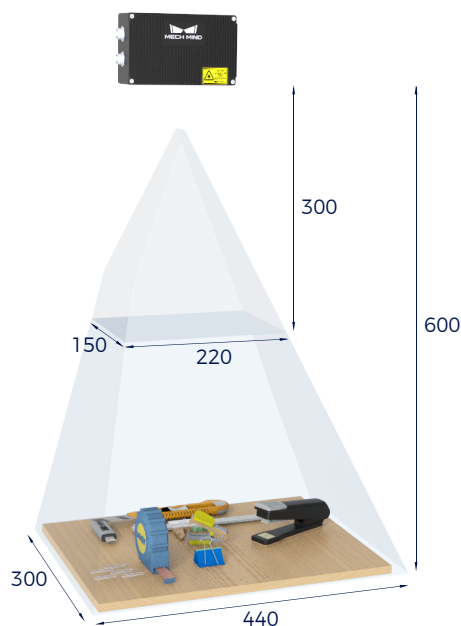
Light source: Blue LED (459 nm, RG2)

Safety and EMC: CE/FCC/VCCI/UKCA/KC/ISED/NRTL

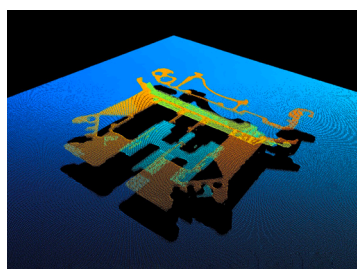
Cooling: Passive

MTBF (Mean Time Between Failures) : $\geq 40,000$ hours

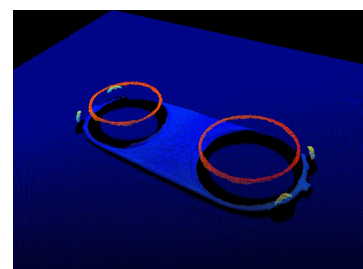
Field of View (mm)



Point Clouds



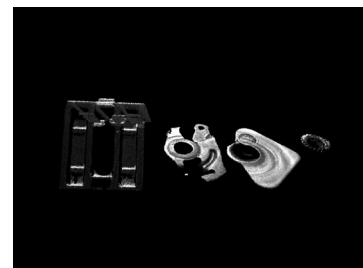
Precision component



0.68 mm thick workpiece



Car charging port



Small parts

[1] One standard deviation of 100 Z-value measurements of the same point. The measurement target was a ceramic plate.

[2] According to VDI/VDE 2634 Part II.