

# Mech-Eye DEEP Industrial 3D Camera

For depalletizing and palletizing applications in logistics

Ultra-large FOV | High accuracy | For long-range working distance  
High performance | Competitive price | Plug & play simple setup



MTBF (Mean Time Between Failures): **≥ 40,000 hours**

## Specification

Recommended working distance: 1200–3500 mm

Near FOV: 1200 × 1000 mm @ 1.2 m

Far FOV: 3500 × 2800 mm @ 3.5 m

Depth map resolution: 2048 × 1536

RGB resolution: 2000 × 1500

Point Z-value repeatability ( $\sigma$ )<sup>[1]</sup>: 1.0 mm @ 3.0 m

Measurement accuracy (VDI/VDE)<sup>[2]</sup>: 3.0 mm @ 3.0 m

Typical capture time: 0.5–0.9 s

Image sensor: Sony CMOS for high-end machine vision

Baseline: Approx. 300 mm

Dimensions: Approx. 366 × 77 × 92 mm

Weight: Approx. 2.4 kg

Light source: Red laser (638 nm, Class 2)

Operating temperature: -10–45°C

Communication interface: Gigabit Ethernet

Input: 24 V DC, 3.75 A

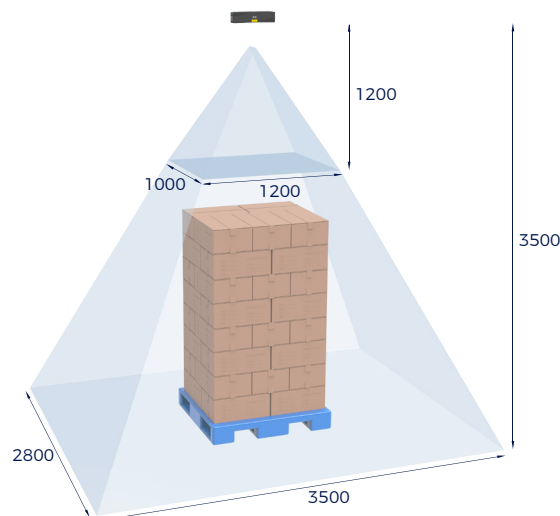
Safety and EMC: CE/FCC/VCCI/UKCA/KC/ISED/NRTL

IP rating: IP65

Cooling: Passive

MTBF (Mean Time Between Failures) : ≥ 40,000 hours

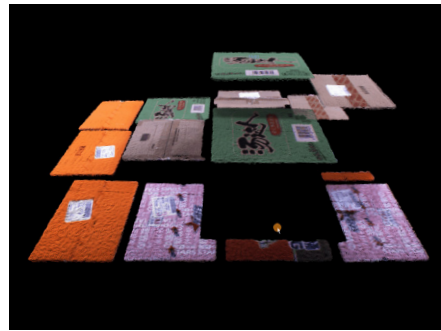
## Field of View (mm)



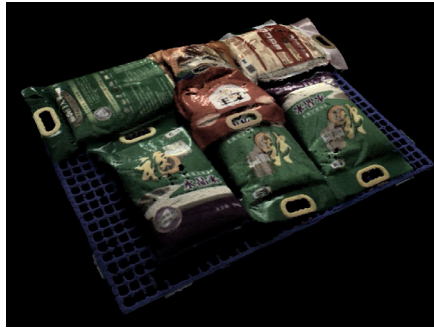
[1] One standard deviation of 100 Z-value measurements of the same point. The measurement target was a ceramic plate.

[2] According to VDI/VDE 2634 Part II.

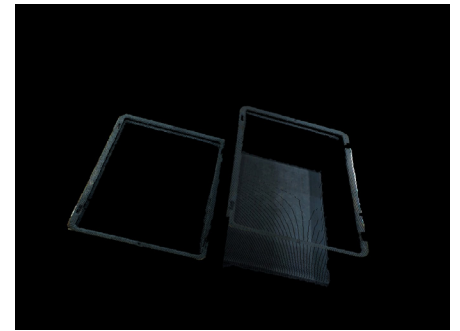
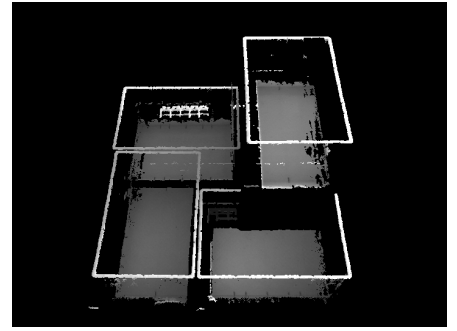
## Point Clouds



Tightly-packed cartons with patterns and tapes



Tightly-packed sacks with patterns



Totes

## Designed for large FOV logistics applications

